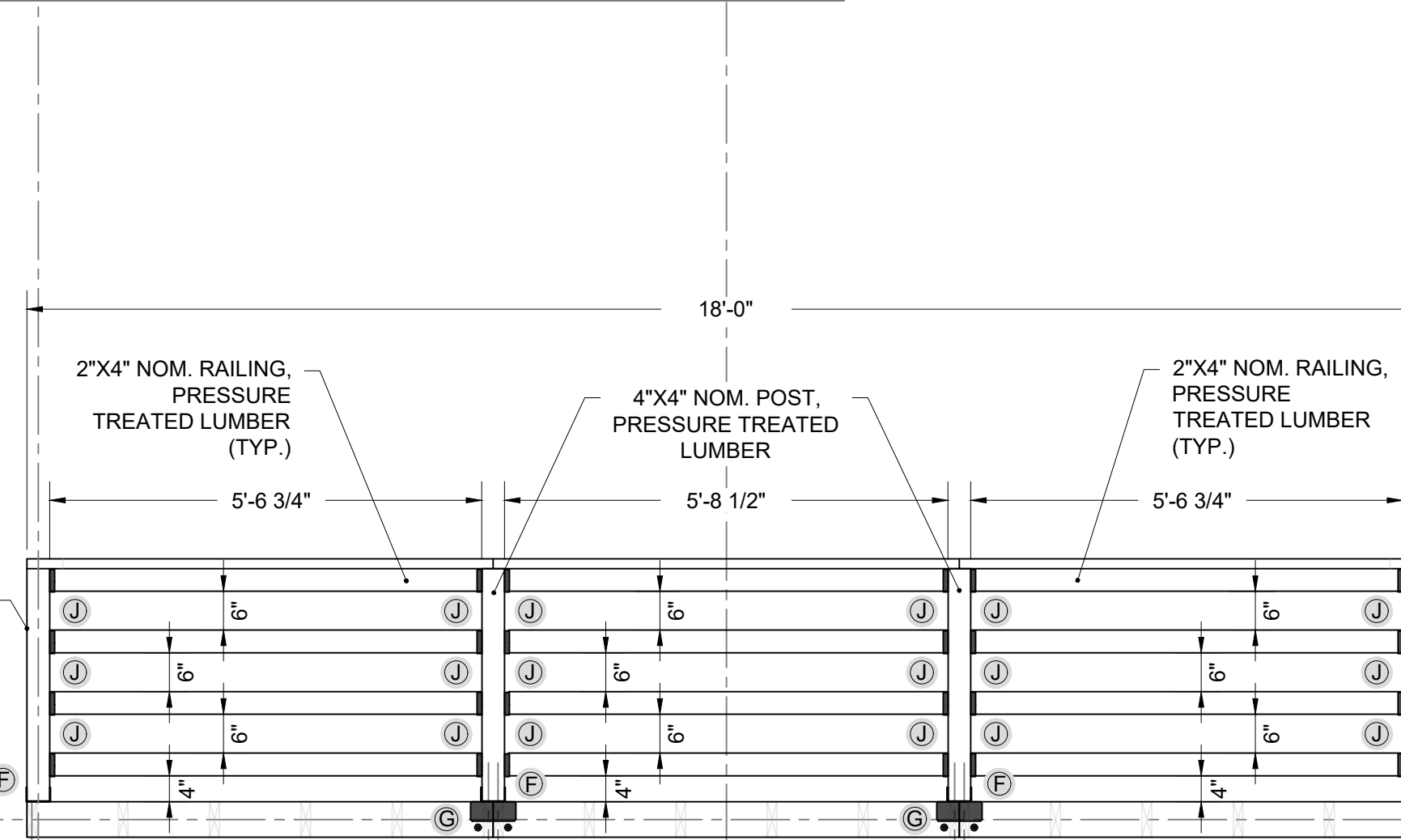


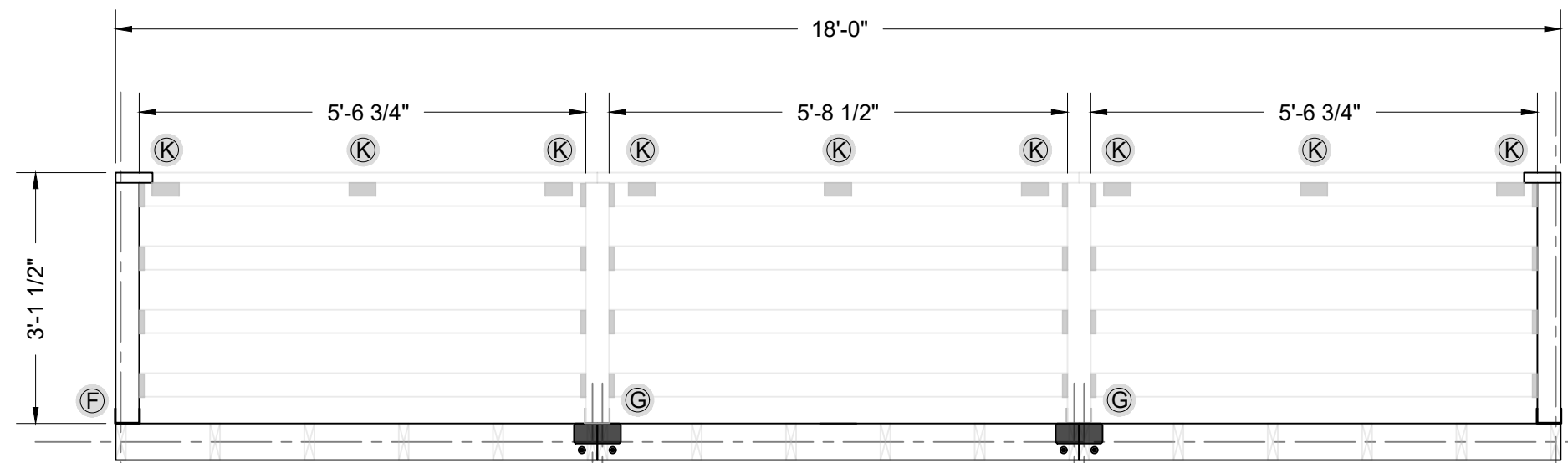
1 RAILING PLAN VIEW



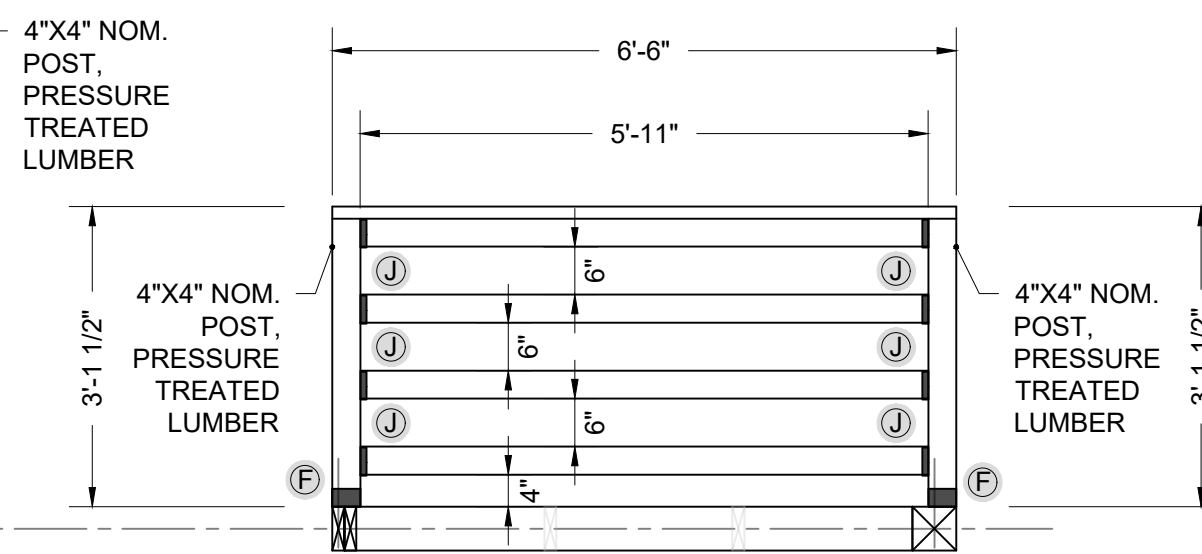
3 REAR ELEVATION - STREET VIEW

NOTES:

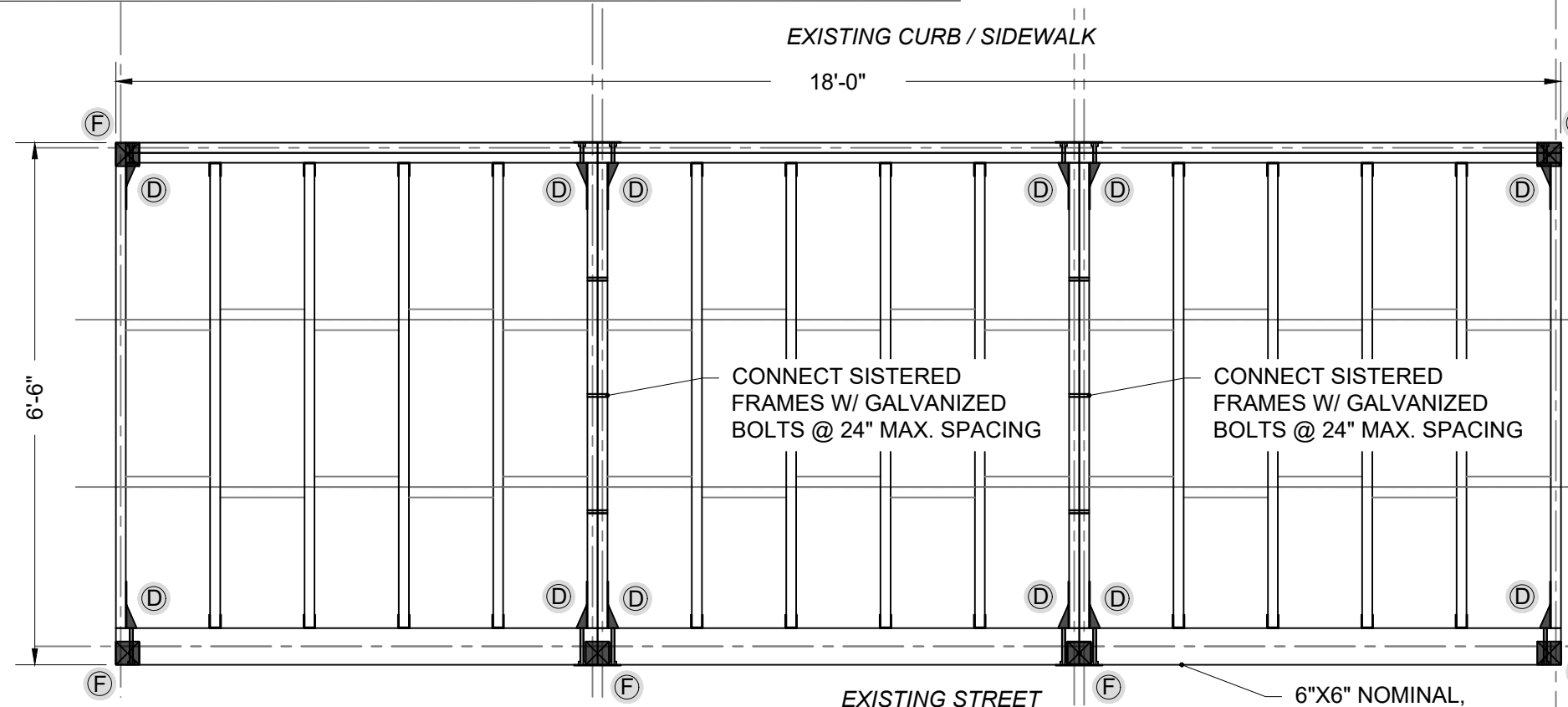
- SUPPORT THE DECK PLATFORM WITH PEDESTALS AT THE LOCATIONS PRESENTED IN THE PLATFORM SUPPORT DETAILS.
- INSTALL THE PLATFORM SUPPORTS PER THE MANUFACTURER'S RECOMMENDATIONS.
- ALIGN FINISHED PLATFORM DECK SURFACE WITH TOP OF CURB ELEVATION OR SLOPED AT A MAXIMUM OF 1.0% (IN ALL DIRECTIONS), WHICHEVER IS LESSER. EMPLOY ADJUSTABLE SUPPORT PEDESTALS TO PERFORM ELEVATION REFINEMENT. USE SUPPLEMENTAL ADJUSTABLE BASE LEVELERS AS NECESSARY TO ACCOMMODATE ROADWAY RUNNING (LONGITUDINAL) SLOPE.
- THE PEDESTAL MODELS SPECIFIED IN THE DRAWINGS ARE BASED ON A TYPICAL CURB HEIGHT (7" REVEAL) & ROADWAY GEOMETRY (2% CROSS-SLOPE). CONTRACTOR TO VERIFY FIELD CONDITIONS PRIOR TO FURNISHING THE SITE-SPECIFIC PEDESTALS NECESSARY TO MAINTAIN ALIGNMENT WITH THE TOP OF CURB ELEVATIONS AND/OR TO ACHIEVE A MAXIMUM DECK SURFACE SLOPE OF LESS THAN 1%. REFERENCE STRUCTURAL FRAMING PLAN DRAWING SFP-03 FOR PLATFORM PEDESTAL ALTERNATES.
- OFFSET THE PLATFORM 6 INCHES FROM THE CURB FACE. USE A STEEL PLATE TO SPAN THE CURB GUTTER AND TO PROVIDE AN ADA ACCESSIBLE TRANSITION FROM THE SIDEWALK TO DECK SURFACE.
- USE WEATHER-RESISTANT DECK SCREWS THAT ARE COMPATIBLE WITH PRESSURE TREATED LUMBER AND THE CONNECTION MANUFACTURER'S SPECIFICATIONS. SUPPLEMENT THE SPECIFIED FRAME CONNECTIONS WITH ADDITIONAL DECK SCREWS AS NECESSARY TO SECURE THE COMPONENTS AND FACILITATE ASSEMBLY.
- CONNECTION / PEDESTAL HARDWARE SCHEDULE PROVIDED ON DRAWING SFP-03.



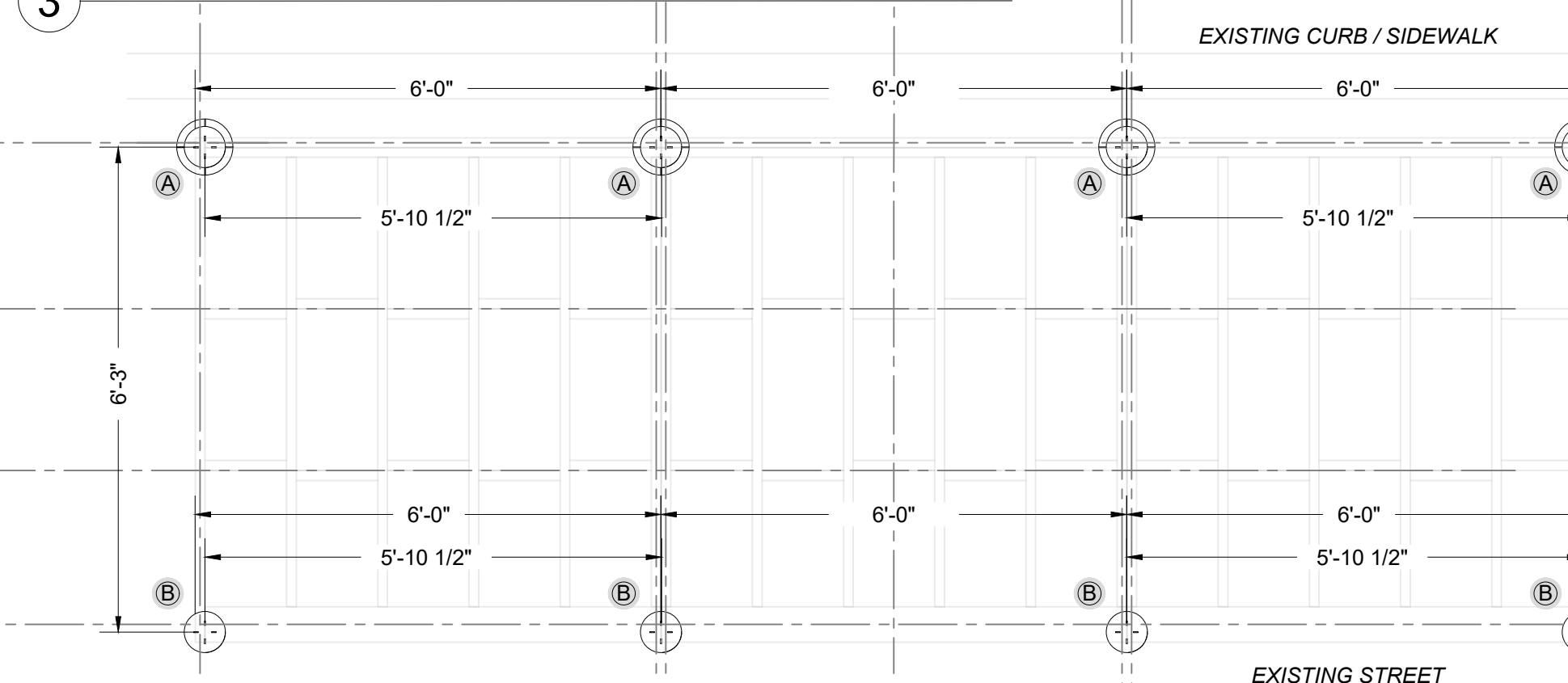
2 FRONT ELEVATION - SIDEWALK VIEW



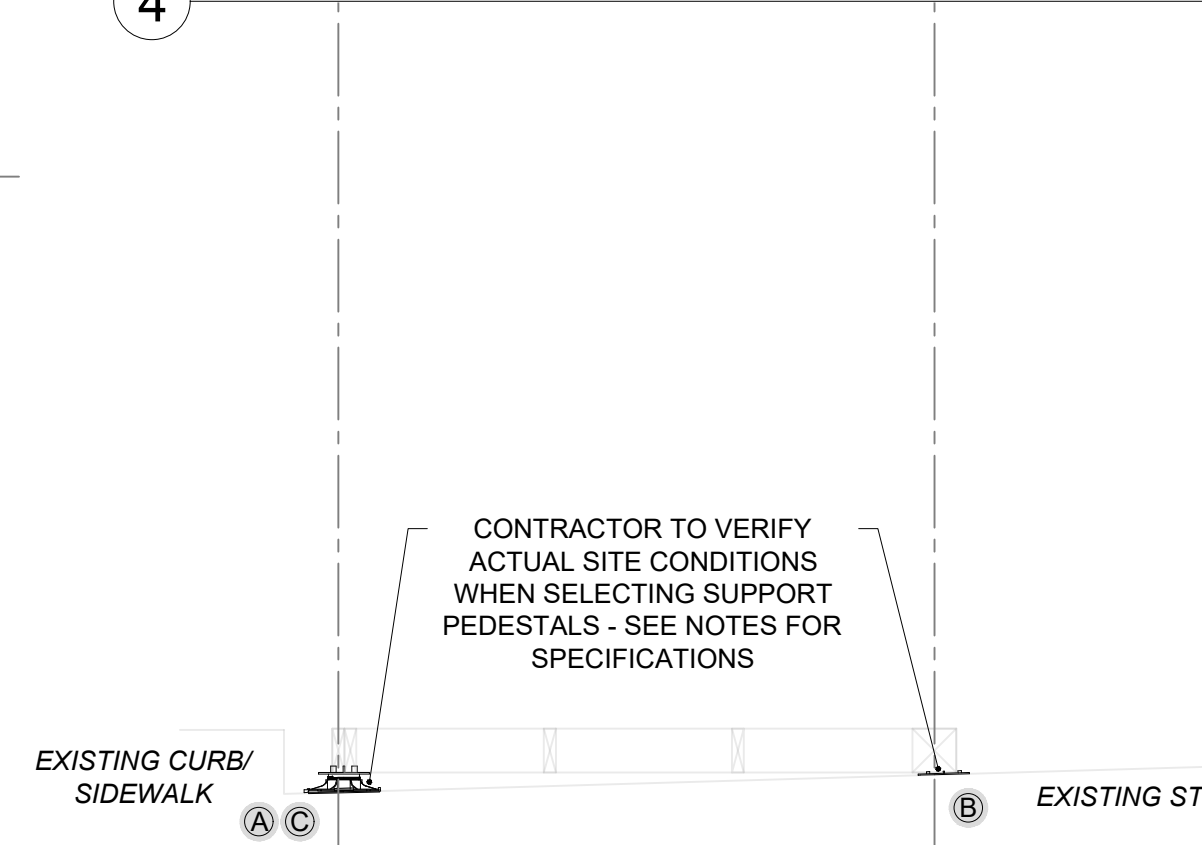
4 RIGHT SIDE ELEVATION



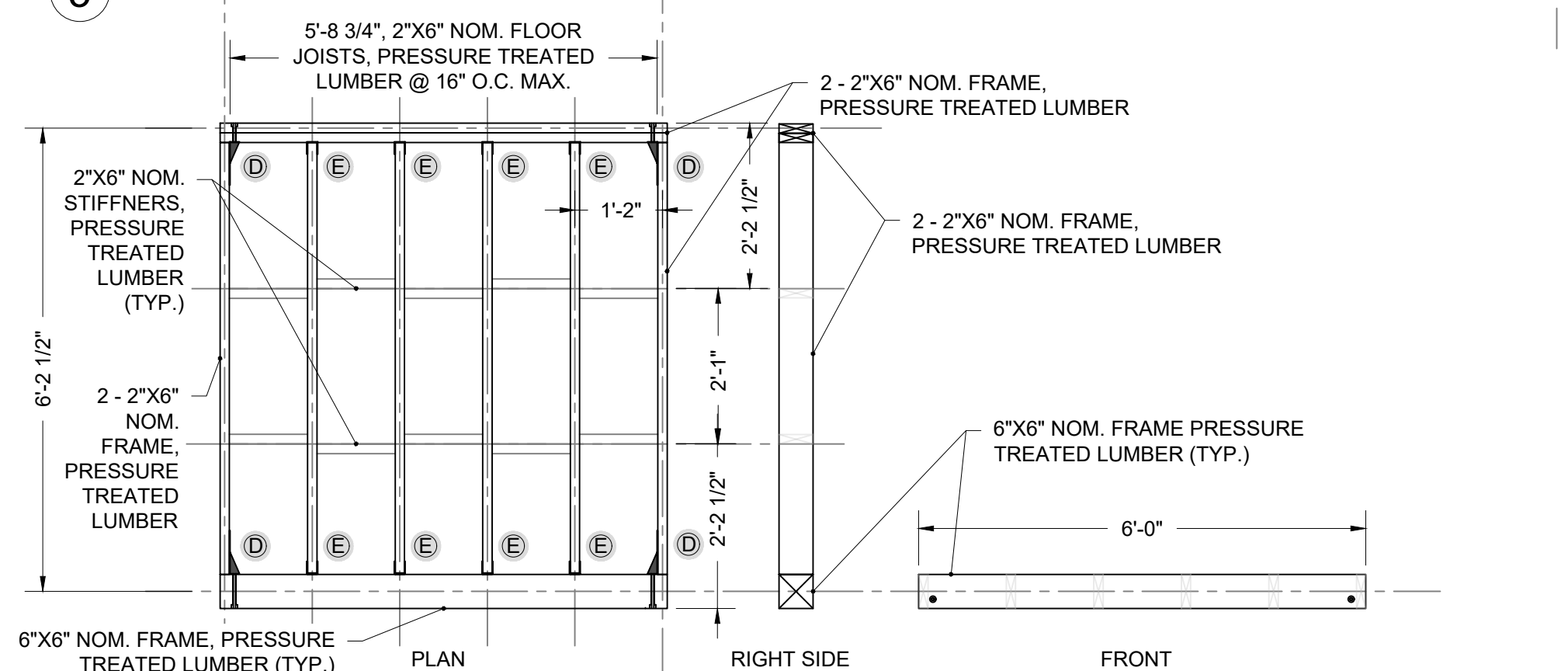
5 PLATFORM FRAMING PLAN - 3 MODULAR UNITS



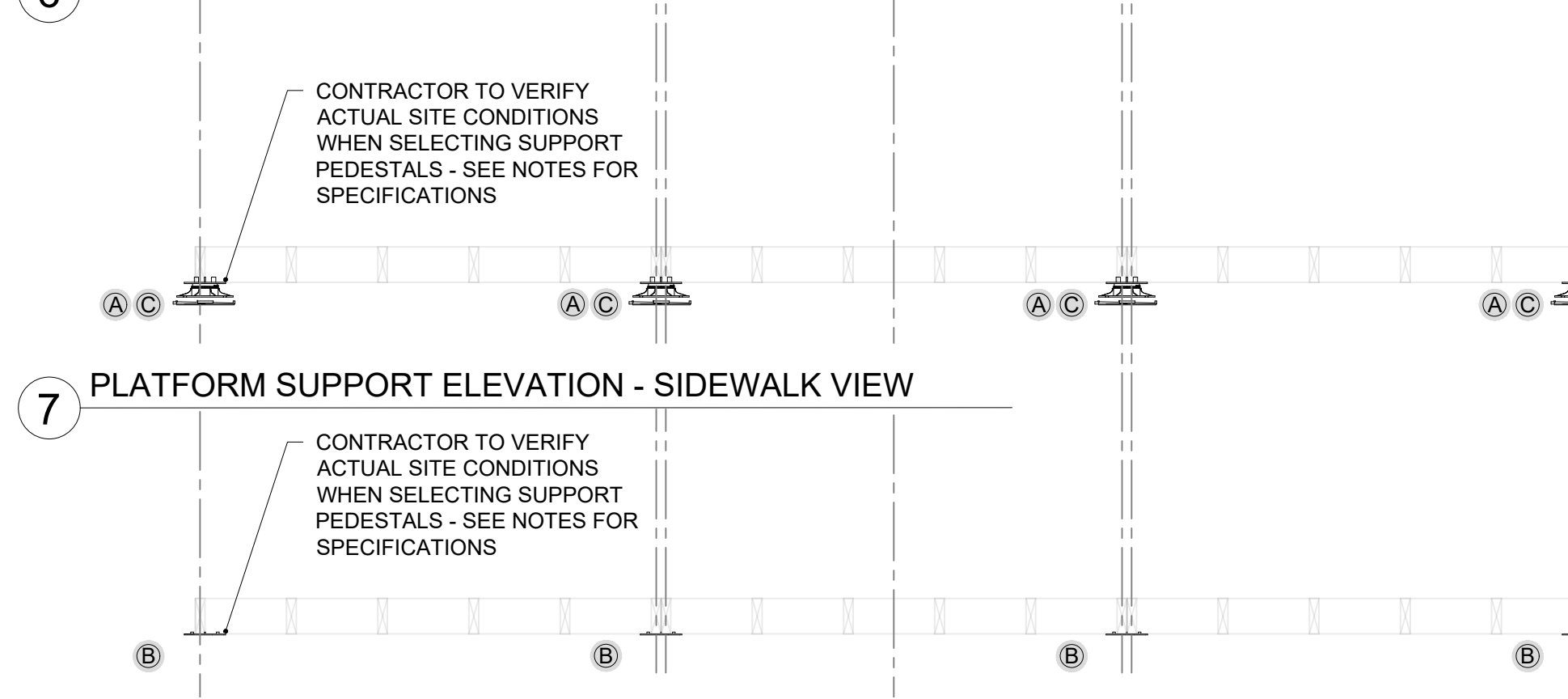
6 PLATFORM SUPPORT PLAN



9 PLATFORM ELEVATION - RIGHT SIDE VIEW



10 PLATFORM MODULAR UNIT



7 PLATFORM SUPPORT ELEVATION - SIDEWALK VIEW

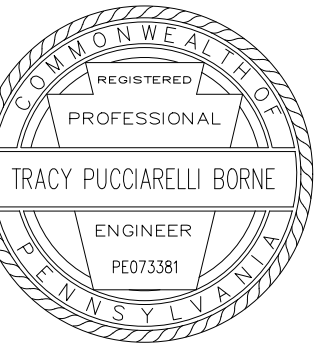
8 PLATFORM SUPPORT ELEVATION - STREET VIEW

earthspan

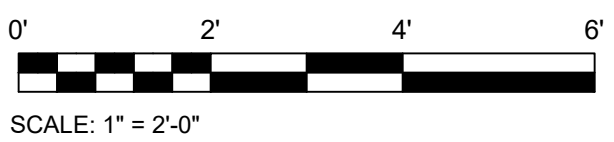
EARTHSPAN, LLC
P.O. BOX 15260
PITTSBURGH, PA
15237

WWW.EARTHSPANLLC.COM

TRACY.BORNE@EARTHSPANLLC.COM



URBAN REDEVELOPMENT AUTHORITY
412 BOULEVARD OF THE ALLIES
SUITE 901
PITTSBURGH, PENNSYLVANIA 15219



EARTHSPAN, LLC PROJECT NUMBER 2022-002
CONSTRUCTION DOCUMENTS 05/31/2023
REVISIONS

NO.	DESCRIPTION	DATE

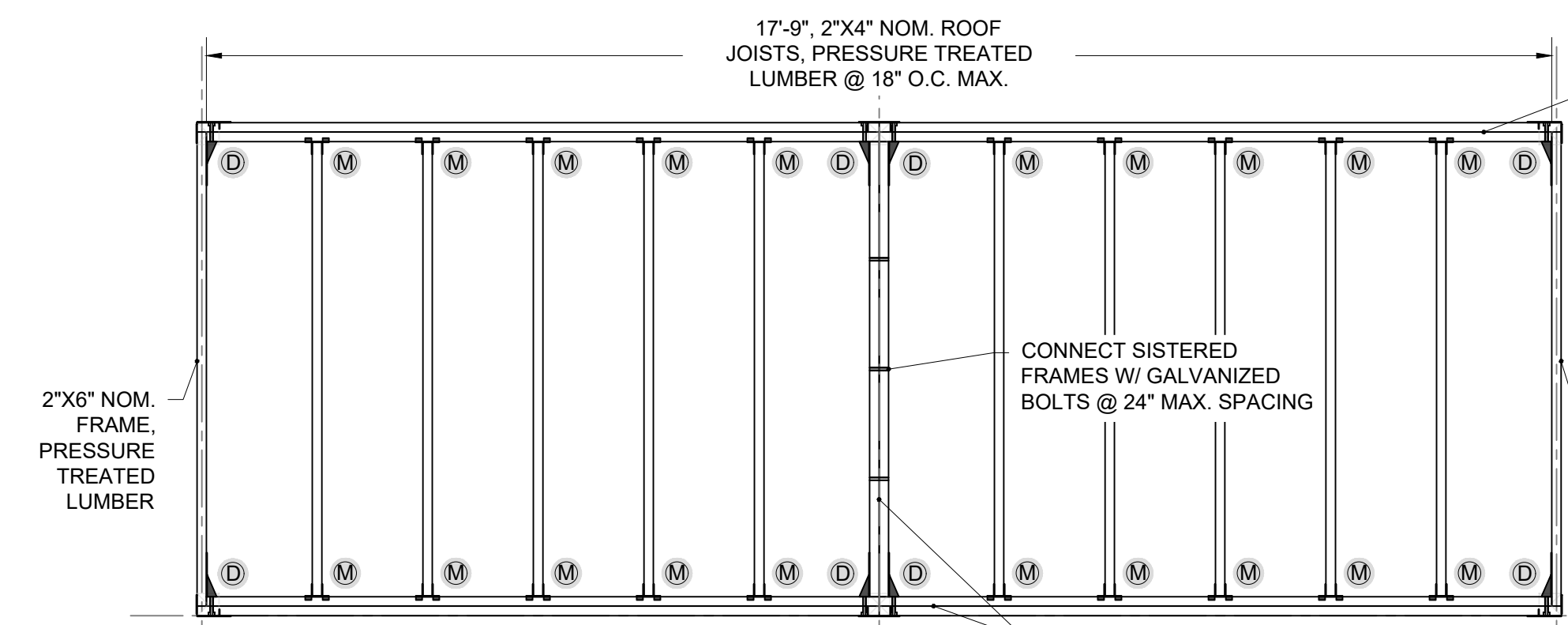
© COPYRIGHT EARTHSPAN, LLC 2023

URA OUTDOOR DINING STANDARDS

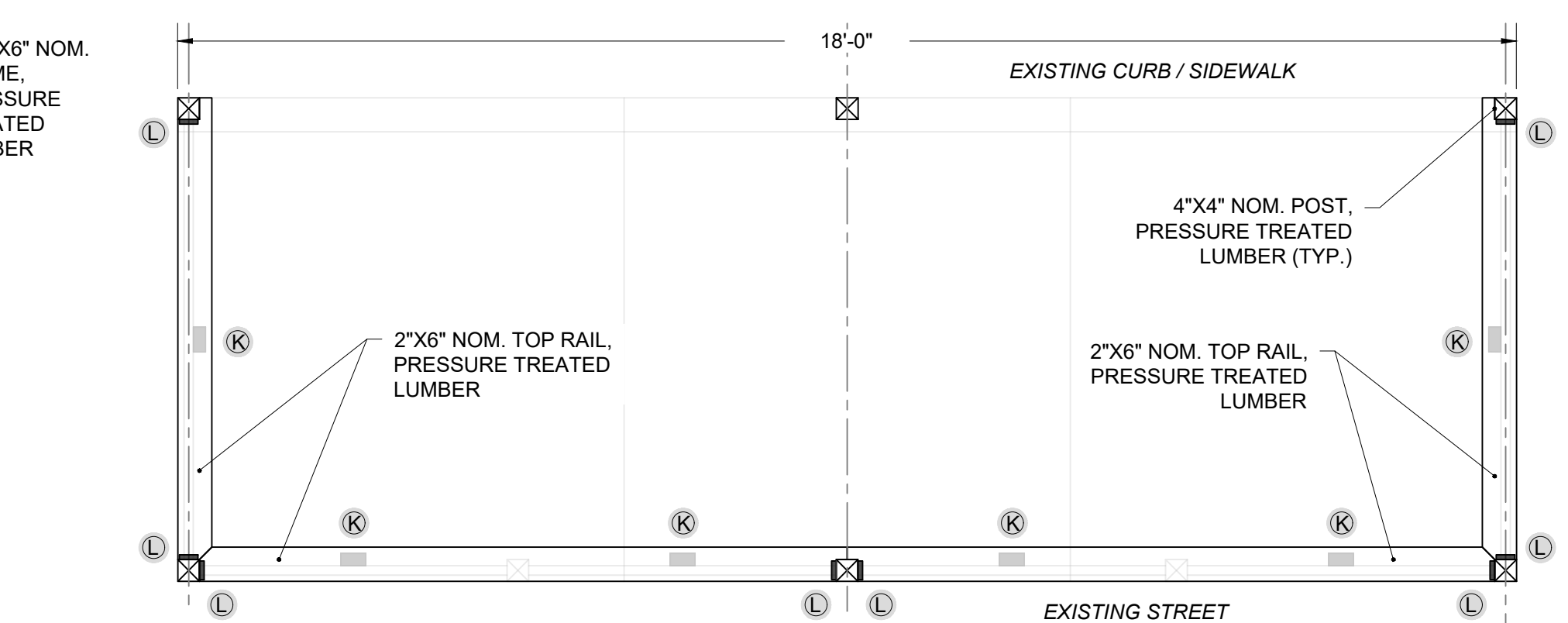
CITY OF PITTSBURGH, PENNSYLVANIA

STRUCTURAL FRAMING PLAN - ALTERNATE 2
PLATFORM + RAILING

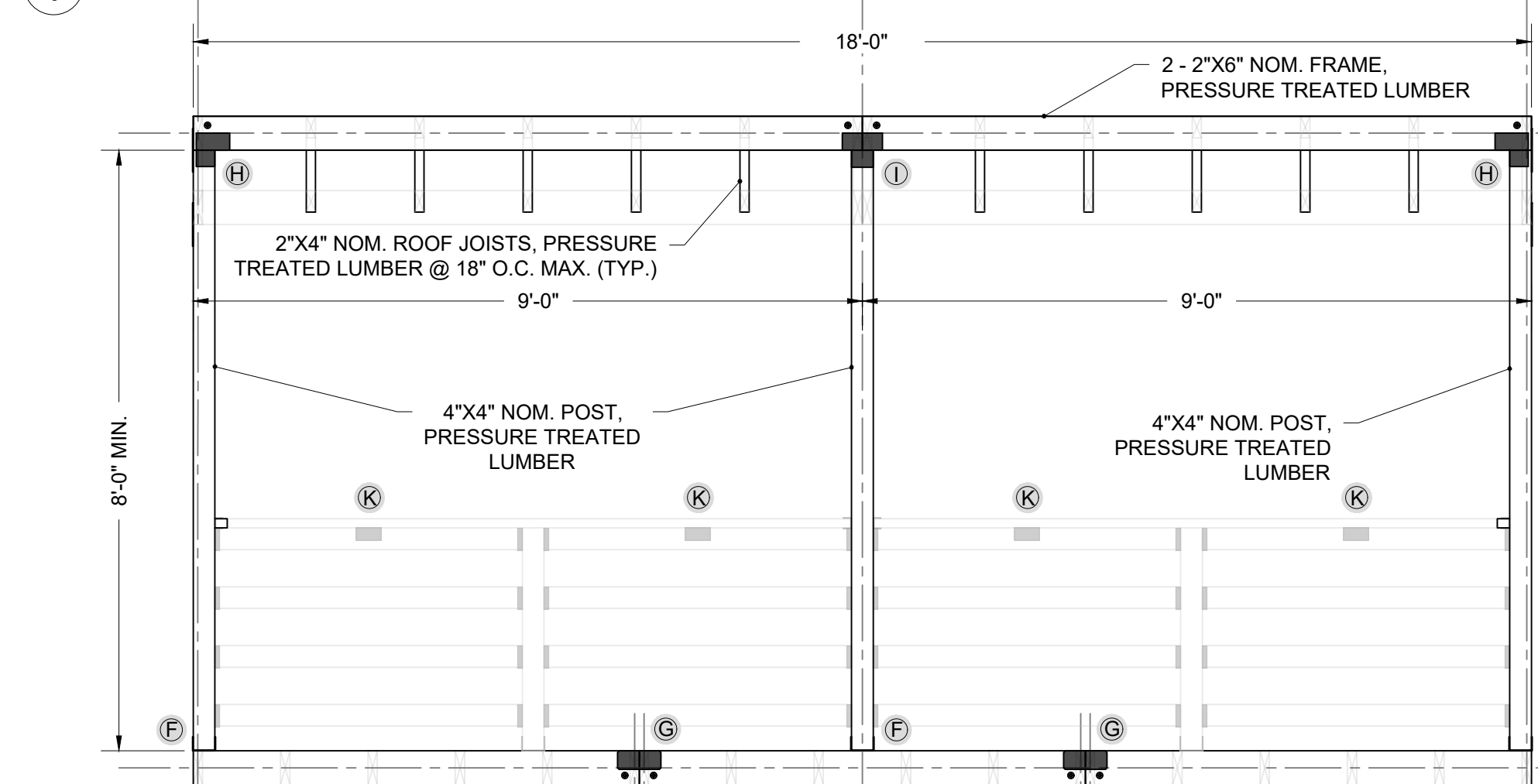
SFP-01



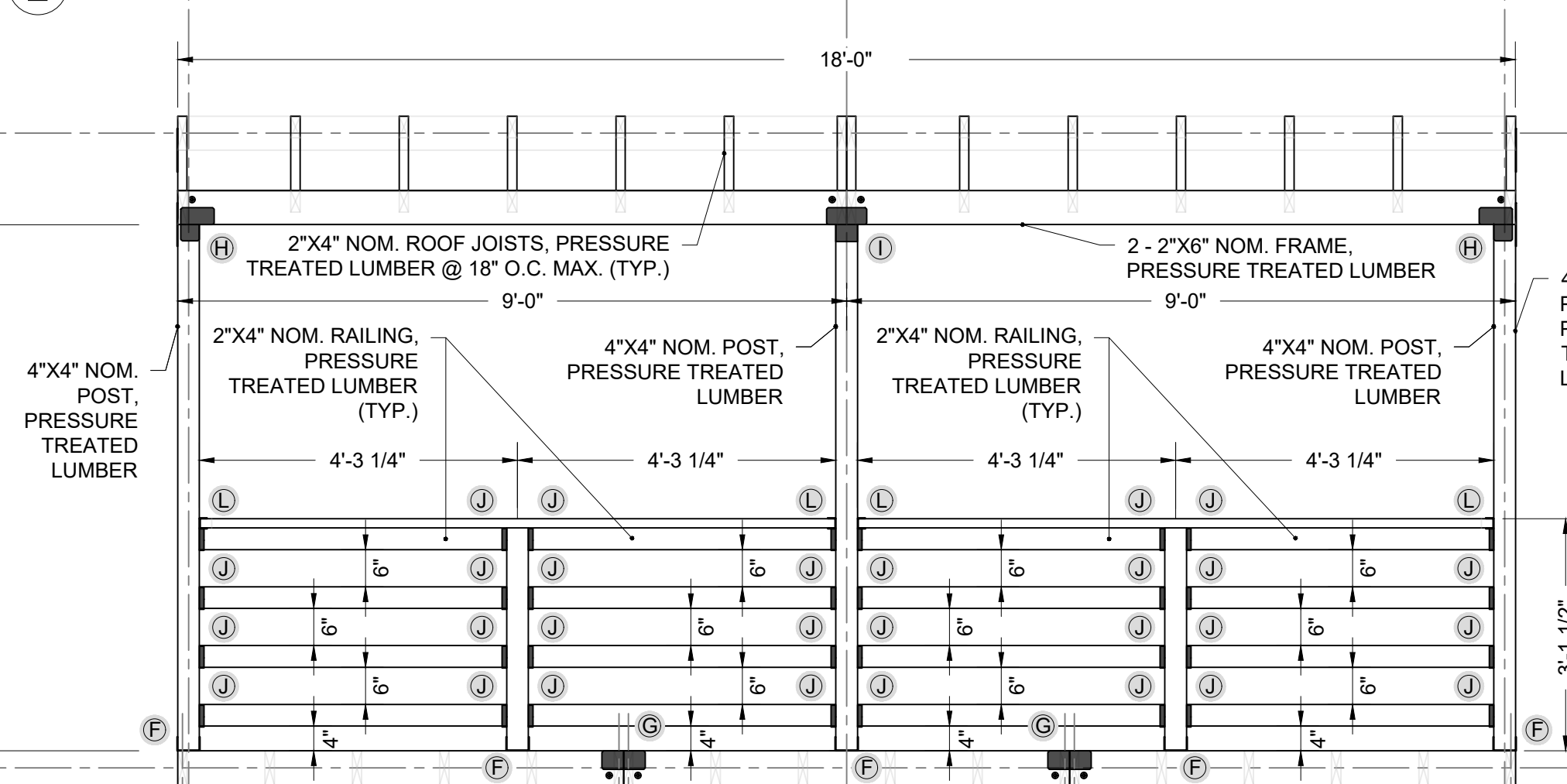
1 ROOF FRAMING PLAN VIEW



2 RAILING PLAN VIEW

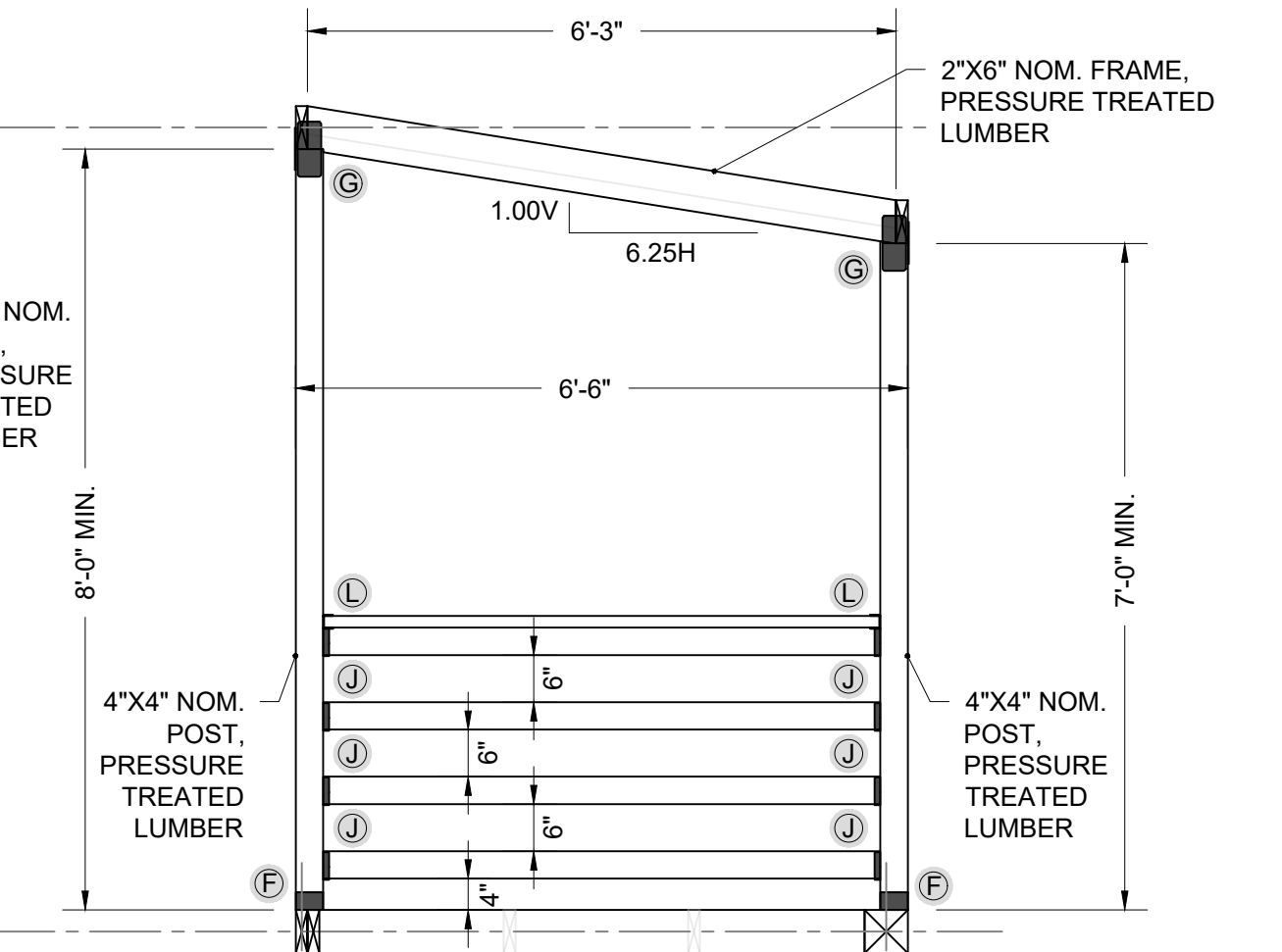


3 CANOPY FRONT ELEVATION - SIDEWALK VIEW

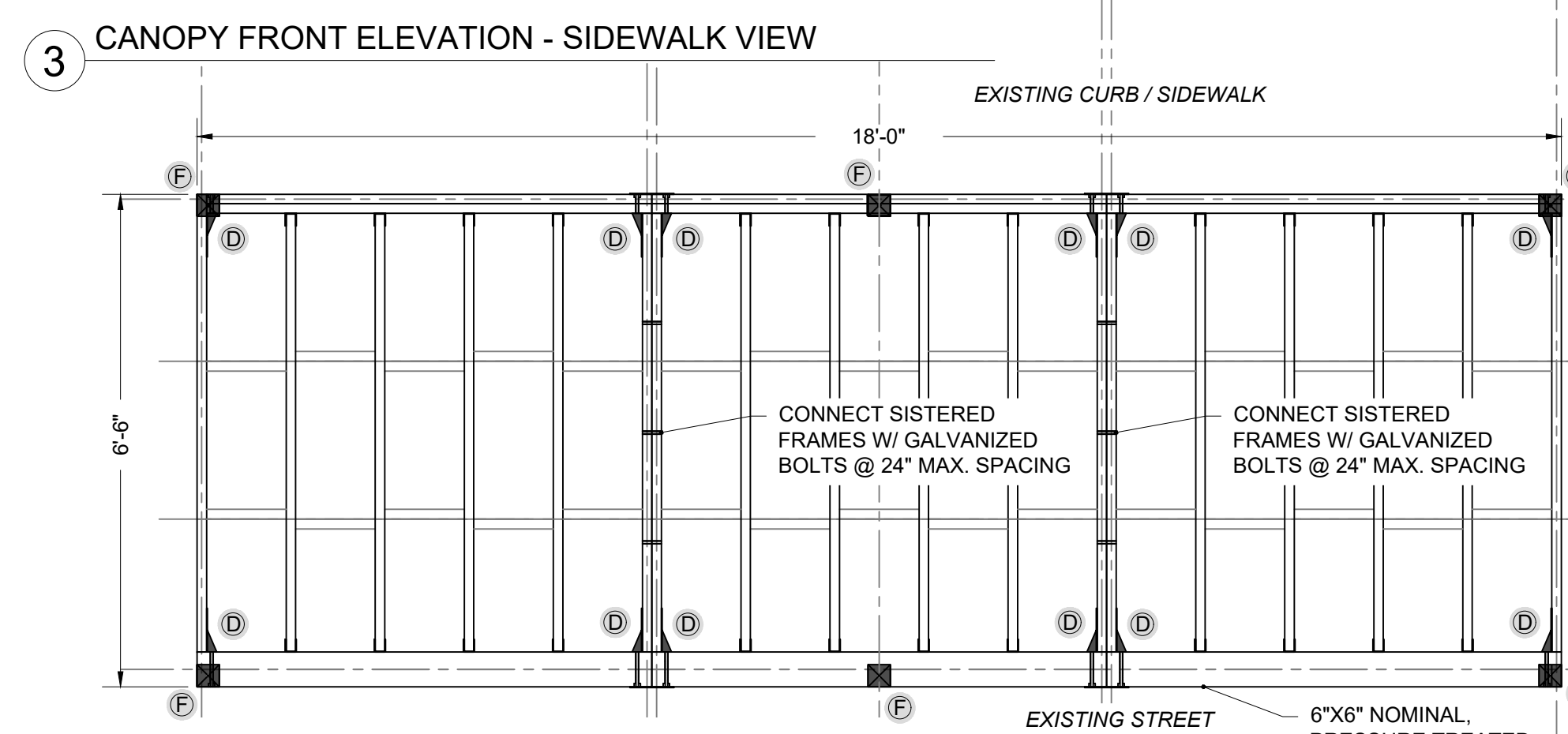


4 CANOPY REAR ELEVATION - STREET VIEW

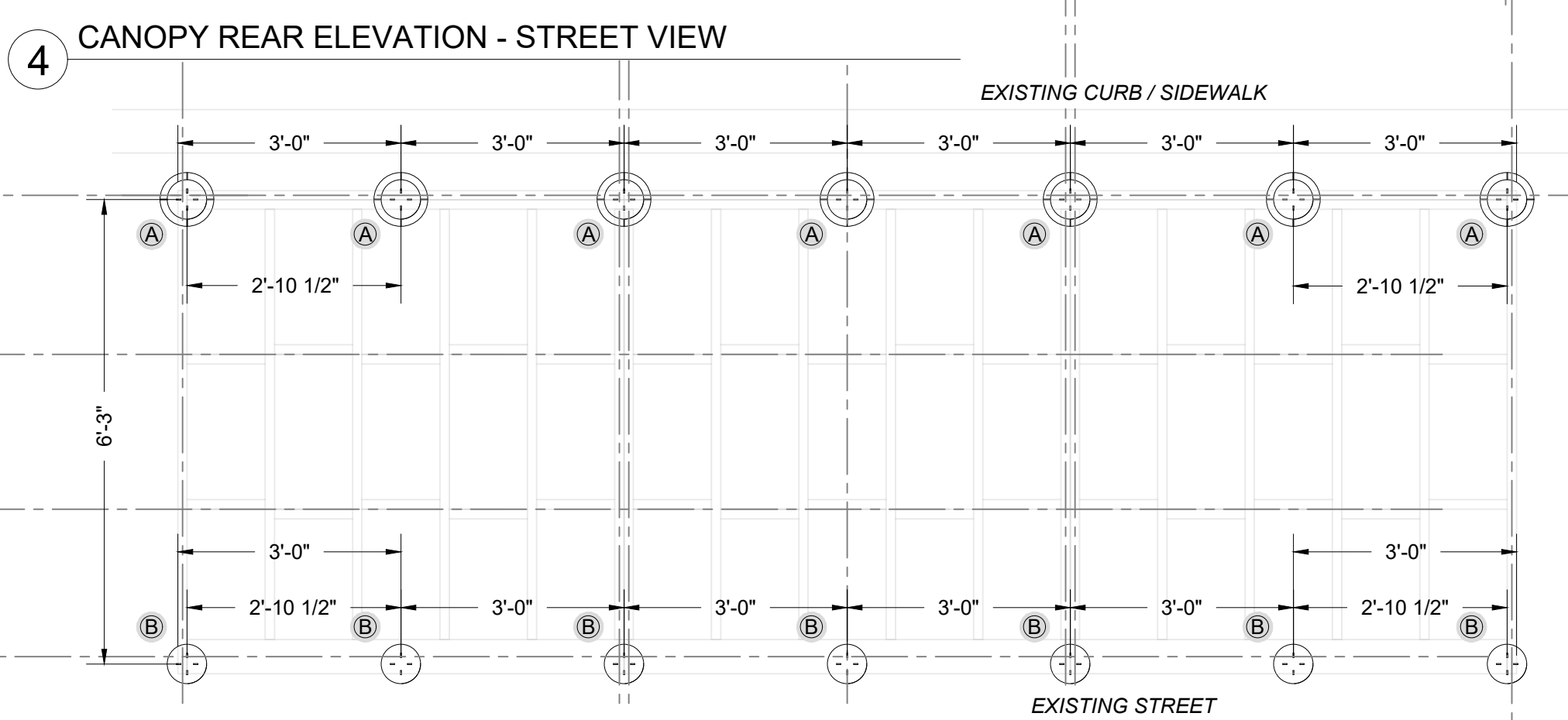
- NOTES:
- SUPPORT THE DECK PLATFORM WITH PEDESTALS AT THE LOCATIONS PRESENTED IN THE PLATFORM SUPPORT DETAILS.
 - INSTALL THE PLATFORM SUPPORTS PER THE MANUFACTURER'S RECOMMENDATIONS.
 - ALIGN FINISHED PLATFORM DECK SURFACE WITH TOP OF CURB ELEVATION OR SLOPED AT A MAXIMUM OF 1.0% (IN ALL DIRECTIONS), WHICHEVER IS LESSER. EMPLOY ADJUSTABLE SUPPORT PEDESTALS TO PERFORM ELEVATION REFINEMENT. USE SUPPLEMENTAL ADJUSTABLE BASE LEVELERS AS NECESSARY TO ACCOMMODATE ROADWAY RUNNING (LONGITUDINAL) SLOPE.
 - THE PEDESTAL MODELS SPECIFIED IN THE DRAWINGS ARE BASED ON A TYPICAL CURB HEIGHT (7" REVEAL) & ROADWAY GEOMETRY (2% CROSS-SLOPE). CONTRACTOR TO VERIFY FIELD CONDITIONS PRIOR TO FURNISHING THE SITE-SPECIFIC PEDESTALS NECESSARY TO MAINTAIN ALIGNMENT WITH THE TOP OF CURB ELEVATIONS AND/OR TO ACHIEVE A MAXIMUM DECK SURFACE SLOPE OF LESS THAN 1%. REFERENCE STRUCTURAL FRAMING PLAN DRAWING SFP-03 FOR PLATFORM PEDESTAL ALTERNATES.
 - OFFSET THE PLATFORM 6 INCHES FROM THE CURB FACE. USE A STEEL PLATE TO SPAN THE CURB GUTTER AND TO PROVIDE AN ADA ACCESSIBLE TRANSITION FROM THE SIDEWALK TO DECK SURFACE.
 - USE WEATHER-RESISTANT DECK SCREWS THAT ARE COMPATIBLE WITH PRESSURE TREATED LUMBER AND THE CONNECTION MANUFACTURER'S SPECIFICATIONS. SUPPLEMENT THE SPECIFIED FRAME CONNECTIONS WITH ADDITIONAL DECK SCREWS AS NECESSARY TO SECURE THE COMPONENTS AND FACILITATE ASSEMBLY.
 - CONNECTION / PEDESTAL HARDWARE SCHEDULE PROVIDED ON DRAWING SFP-03.



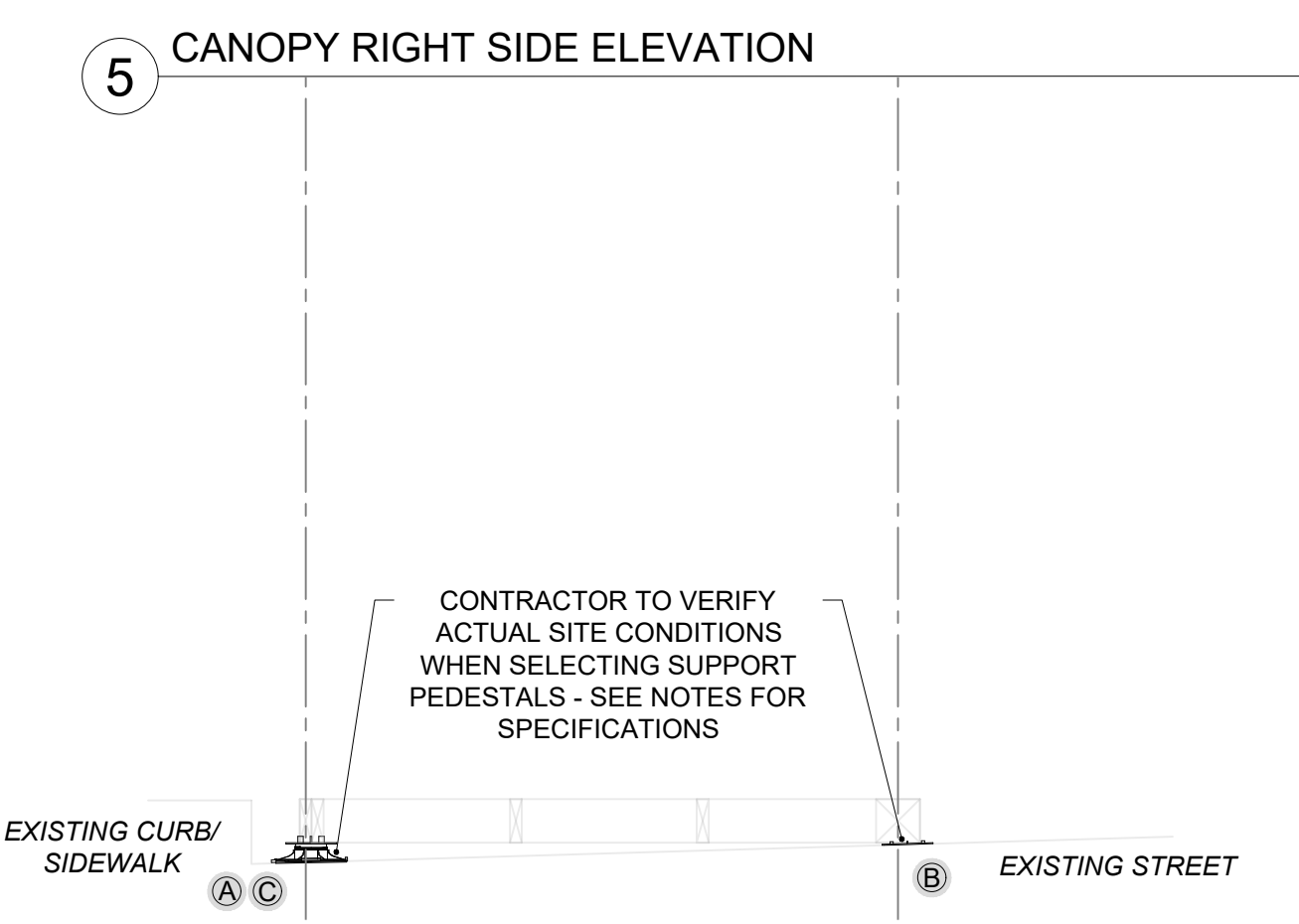
5 CANOPY RIGHT SIDE ELEVATION



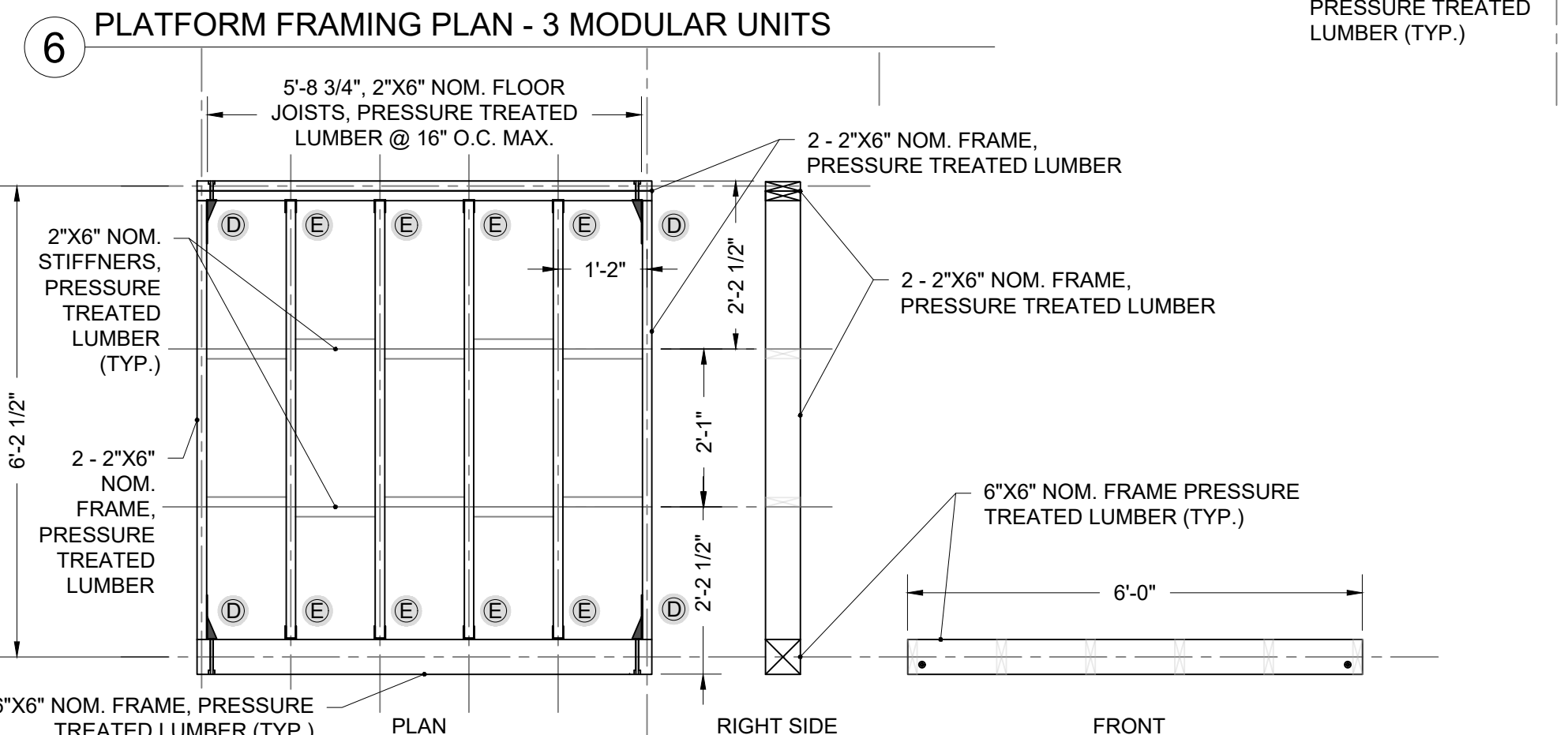
6 PLATFORM FRAMING PLAN - 3 MODULAR UNITS



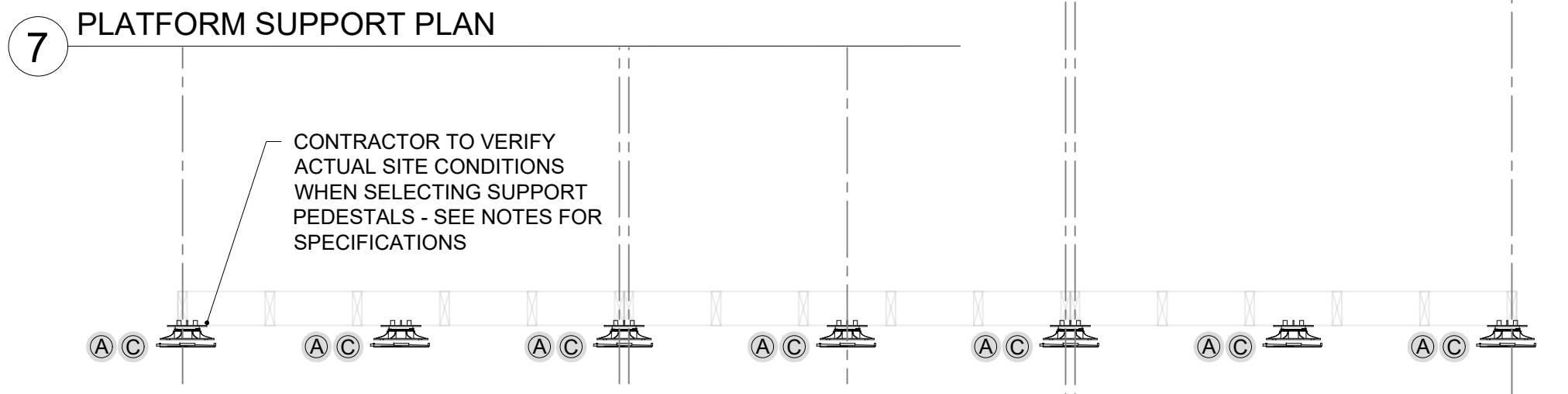
7 PLATFORM SUPPORT PLAN



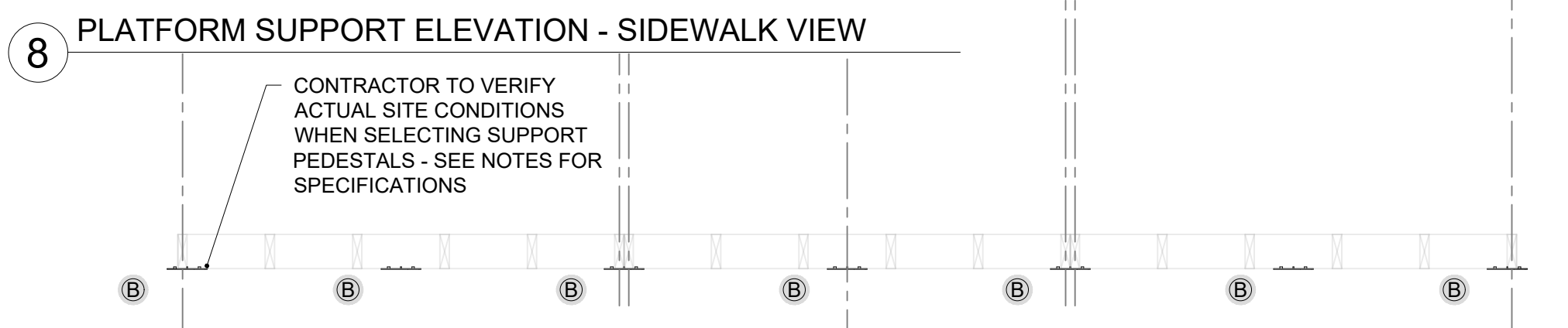
10 PLATFORM ELEVATION - RIGHT SIDE VIEW



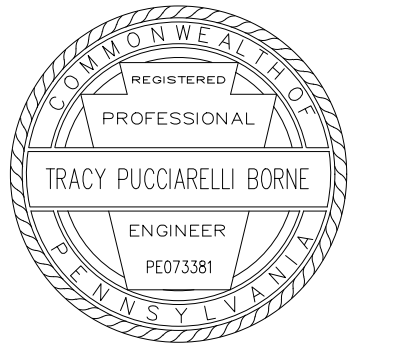
11 PLATFORM MODULAR UNIT



8 PLATFORM SUPPORT ELEVATION - SIDEWALK VIEW



9 PLATFORM SUPPORT ELEVATION - STREET VIEW



URBAN REDEVELOPMENT AUTHORITY
412 BOULEVARD OF THE ALLIES
SUITE 901
PITTSBURGH, PENNSYLVANIA 15219



EARTHSPAN, LLC PROJECT NUMBER 2022-002
CONSTRUCTION DOCUMENTS 05/31/2023
REVISIONS

NO.	DESCRIPTION	DATE

© COPYRIGHT EARTHSPAN, LLC 2023

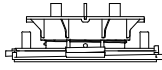


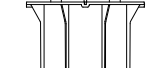
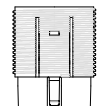
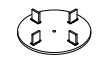

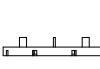
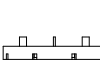


URA OUTDOOR DINING STANDARDS

CITY OF PITTSBURGH, PENNSYLVANIA

STRUCTURAL FRAMING PLAN - ALTERNATE 3
PLATFORM + CANOPY

SFP-02

BISON VERSADJUST PEDESTAL ALTERNATES

PRODUCT LINE	MODEL NO.	DESCRIPTION	HEIGHT RANGE
	V1-18 V1-316	ADJUSTABLE PEDESTAL 1/8" (3.2 mm) TAB ADJUSTABLE PEDESTAL 3/16" (4.5 mm) TAB	2-1/4" TO 2-3/4" (57 TO 70 mm)
	V2-18 V2-316	ADJUSTABLE PEDESTAL 1/8" (3.2 mm) TAB ADJUSTABLE PEDESTAL 3/16" (4.5 mm) TAB	2-3/4" TO 3-3/4" (70 TO 95 mm)
	V3-18 V3-316	ADJUSTABLE PEDESTAL 1/8" (3.2 mm) TAB ADJUSTABLE PEDESTAL 3/16" (4.5 mm) TAB	3-3/4" TO 5-3/4" (95 TO 146 mm)
	V4-18 V4-316	ADJUSTABLE PEDESTAL 1/8" (3.2 mm) TAB ADJUSTABLE PEDESTAL 3/16" (4.5 mm) TAB	5-3/4" TO 9" (146 TO 229 mm)
	VC2	QUICK CLIP COUPLER FOR USE WITH MODEL V4 ONLY	ADDS UP TO 4" (102 mm) EACH
	VT18 VT316	ULTRA LOW HEIGHT 1/8" (3.2 mm) TAB ULTRA LOW HEIGHT 3/16" (4.5 mm) TAB	1/8" (3.2 mm)
	HD25-18 HD25-316	FIXED HEIGHT STACKABLE 1/8" (3.2 mm) TAB FIXED HEIGHT STACKABLE 3/16" (4.5 mm) TAB	1/4" (6 mm)
	HD50-18 HD50-316	FIXED HEIGHT STACKABLE 1/8" (3.2 mm) TAB FIXED HEIGHT STACKABLE 3/16" (4.5 mm) TAB	1/2" (13 mm)
	HD75-18 HD75-316	FIXED HEIGHT STACKABLE 1/8" (3.2 mm) TAB FIXED HEIGHT STACKABLE 3/16" (4.5 mm) TAB	3/4" (19 mm)
	LO-18 LO-316	LOW HEIGHT ADJUSTABLE 1/8" (3.2 mm) TAB LOW HEIGHT ADJUSTABLE 3/16" (4.5 mm) TAB	1-1/4" TO 2" (32 TO 51 mm)
	LD4	BASE LEVELER FOR 1/4" PER FOOT (2%) SLOPE COMPENSATION	ADDS 1/4" (6 mm)

NOTES:

- SUPPORT THE DECK PLATFORM WITH PEDESTALS AT THE LOCATIONS PRESENTED IN THE PLATFORM SUPPORT DETAILS.
- INSTALL THE PLATFORM SUPPORTS PER THE MANUFACTURER'S RECOMMENDATIONS.
- ALIGN FINISHED PLATFORM DECK SURFACE WITH TOP OF CURB ELEVATION OR SLOPED AT A MAXIMUM OF 1.0% (IN ALL DIRECTIONS), WHICHEVER IS LESSER. EMPLOY ADJUSTABLE SUPPORT PEDESTALS TO PERFORM ELEVATION REFINEMENT. USE SUPPLEMENTAL ADJUSTABLE BASE LEVELERS AS NECESSARY TO ACCOMMODATE ROADWAY RUNNING (LONGITUDINAL) SLOPE.
- THE PEDESTAL MODELS SPECIFIED IN DRAWINGS SFP-01 AND SFP-02 ARE BASED ON A TYPICAL CURB HEIGHT (7" REVEAL) & ROADWAY GEOMETRY (2% CROSS-SLOPE). CONTRACTOR TO VERIFY FIELD CONDITIONS PRIOR TO FURNISHING THE SITE-SPECIFIC PEDESTALS NECESSARY TO MAINTAIN ALIGNMENT WITH THE TOP OF CURB ELEVATIONS AND/OR TO ACHIEVE A MAXIMUM DECK SURFACE SLOPE OF LESS THAN 1%.

CONNECTION / PEDESTAL HARDWARE SCHEDULE
ALTERNATE 2, PLATFORM + RAILING (SFP-01)

ITEM	QUANTITY	UNITS
Ⓐ BISON VERSADJUST PEDESTAL LOW HEIGHT ADJUSTABLE 1/8" (3.2 MM) TAB, 1-1/4" TO 2" (32 TO 51 MM) - LO-18 ^{1,2}	4	EA
Ⓑ BISON VERSADJUST PEDESTAL ULTRA LOW HEIGHT 1/8" (3.2 MM) TAB, 1/8" (3.2 MM) - VT18 ^{1,2}	4	EA
Ⓒ BISON VERSADJUST PEDESTAL BASE LEVELER FOR 1/4" PER FOOT (2%) SLOPE COMPENSATION, ADDS 1/4" (6 MM) - LD4 ^{1,2}	4	EA
Ⓓ SIMPSON STRONG-TIE ZMAX GALVANIZED (G185, 14 GAUGE) TENSION TIE - DTT2Z ¹	12	EA
Ⓔ SIMPSON STRONG-TIE ZMAX GALVANIZED (G185, 18 GAUGE) FACE-MOUNT CONCEALED FLANGE JOIST HANGER, 2"X6" LUMBER - LUC SERIES ¹	24	EA
Ⓕ SIMPSON STRONG-TIE ZMAX GALVANIZED (G185, 18 GAUGE) POST BASE - BC40Z ¹	6	EA
Ⓖ SIMPSON STRONG-TIE ZMAX GALVANIZED (G185, 16 GAUGE) HEAVY TIE PLATE ¹	4	EA
Ⓙ SIMPSON STRONG-TIE ZMAX GALVANIZED (G185, 20 GAUGE) FENCE RAIL BRACKET - FB24Z ¹	40	EA
Ⓚ SIMPSON STRONG-TIE ZMAX GALVANIZED (G185, 12 GAUGE) MEDIUM "L" ANGLE - ML ¹	15	EA

¹ OR APPROVED EQUAL

² STANDARD SUPPORT PEDESTAL SPECIFICATION - FURNISH MODEL TO ACCOMMODATE ACTUAL SITE CONDITIONS

CONNECTION / PEDESTAL HARDWARE SCHEDULE
ALTERNATE 3, PLATFORM + CANOPY (SFP-02)

ITEM	QUANTITY	UNITS
Ⓐ BISON VERSADJUST PEDESTAL LOW HEIGHT ADJUSTABLE 1/8" (3.2 MM) TAB, 1-1/4" TO 2" (32 TO 51 MM) - LO-18 ^{1,2}	7	EA
Ⓑ BISON VERSADJUST PEDESTAL ULTRA LOW HEIGHT 1/8" (3.2 MM) TAB, 1/8" (3.2 MM) - VT18 ^{1,2}	7	EA
Ⓒ BISON VERSADJUST PEDESTAL BASE LEVELER FOR 1/4" PER FOOT (2%) SLOPE COMPENSATION, ADDS 1/4" (6 MM) - LD4 ^{1,2}	7	EA
Ⓓ SIMPSON STRONG-TIE ZMAX GALVANIZED (G185, 14 GAUGE) TENSION TIE - DTT2Z ¹	20	EA
Ⓔ SIMPSON STRONG-TIE ZMAX GALVANIZED (G185, 18 GAUGE) FACE-MOUNT CONCEALED FLANGE JOIST HANGER, 2"X6" LUMBER - LUC SERIES ¹	24	EA
Ⓕ SIMPSON STRONG-TIE ZMAX GALVANIZED (G185, 18 GAUGE) POST BASE - BC40Z ¹	6	EA
Ⓖ SIMPSON STRONG-TIE ZMAX GALVANIZED (G185, 16 GAUGE) HEAVY TIE PLATE ¹	8	EA
Ⓗ SIMPSON STRONG-TIE ZMAX GALVANIZED (G185, 20 GAUGE) END POST CAP - LCE ¹	4	EA
Ⓘ SIMPSON STRONG-TIE ZMAX GALVANIZED (G185, 18 GAUGE) ADJUSTABLE POST CAP - AC ¹	2	EA
Ⓙ SIMPSON STRONG-TIE ZMAX GALVANIZED (G185, 20 GAUGE) FENCE RAIL BRACKET - FB24Z ¹	48	EA
Ⓚ SIMPSON STRONG-TIE ZMAX GALVANIZED (G185, 12 GAUGE) MEDIUM "L" ANGLE - ML ¹	6	EA
Ⓛ SIMPSON STRONG-TIE ZMAX GALVANIZED (G185, 20 GAUGE) RIGID TIE CONNECTOR - RTR ¹	8	EA
Ⓜ SIMPSON STRONG-TIE ZMAX GALVANIZED (G185, 18 GAUGE) POST FRAME HANGER, 2"X4" LUMBER - PF ¹	20	EA

¹ OR APPROVED EQUAL

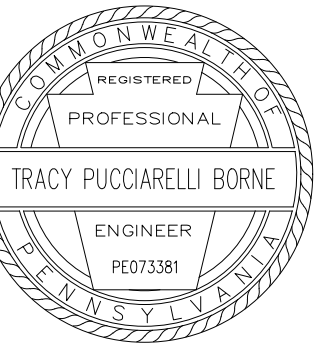
² STANDARD SUPPORT PEDESTAL SPECIFICATION - FURNISH MODEL TO ACCOMMODATE ACTUAL SITE CONDITIONS

earthspan

EARTHSPAN, LLC
P.O. BOX 15260
PITTSBURGH, PA
15237

WWW.EARTHSPANLLC.COM

TRACY.BORNE@EARTHSPANLLC.COM



URBAN REDEVELOPMENT AUTHORITY
412 BOULEVARD OF THE ALLIES
SUITE 901
PITTSBURGH, PENNSYLVANIA 15219



SCALE: NTS

EARTHSPAN, LLC PROJECT NUMBER 2022-002
CONSTRUCTION DOCUMENTS 05/31/2023
REVISIONS

NO.	DESCRIPTION	DATE

© COPYRIGHT EARTHSPAN, LLC 2023

URA OUTDOOR DINING
STANDARDS

CITY OF PITTSBURGH, PENNSYLVANIA

STRUCTURAL FRAMING
PLAN - COMPONENT
SCHEDULES

SFP-03